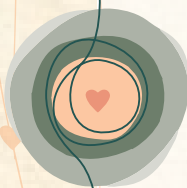




RECONNECTA

vista seus valores



MIV - Manual de Identidade Visual

ÍNDICE

1. O LOGOTIPO

- 1.1 - Versões
- 1.2 - Versões (negativa / positiva)
- 1.3 - Redução máxima
- 1.4 - Assinaturas

2. O SÍMBOLO

- 2.1 - Uso e variações
- 2.2 - Variações de cores

3. AS CORES

- 3.1 - Paleta CMYK e RGB
- 3.2 - Variações

5. AS TEXTURAS

- 5.1 - Cores e grafismos

6. AS FONTES

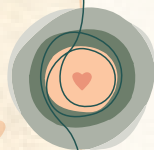
- 6.1 - Para títulos e textos

7. MANDALA ASTROLÓGICA

- 7.1 - Mandala astrológica

8. IMAGENS CONCEITUAIS*

- 8.1 - Imagem conceitual para campanha
(*layout, sem direito de uso comercial*)
- 8.2 - Imagem conceitual para lookbook
(*layout, sem direito de uso comercial*)



1. O LOGOTIPO







4cm



3cm

RECONNECTA

2cm

RECONNECTA

1,5cm



— e s p a ç o —
RECONNECTA

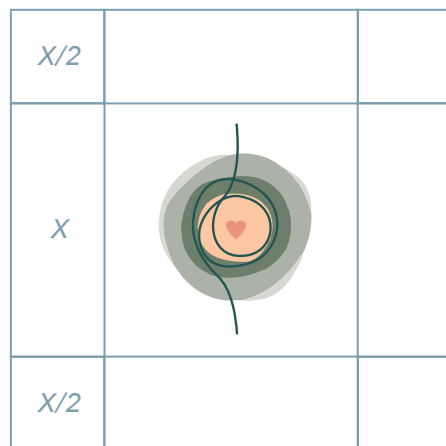
RECONNECTA_♥ kids

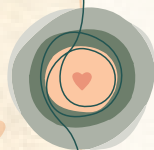
RECONNECTA₊
w o m e n

RECONNECTA₊
n o n b i n a r y

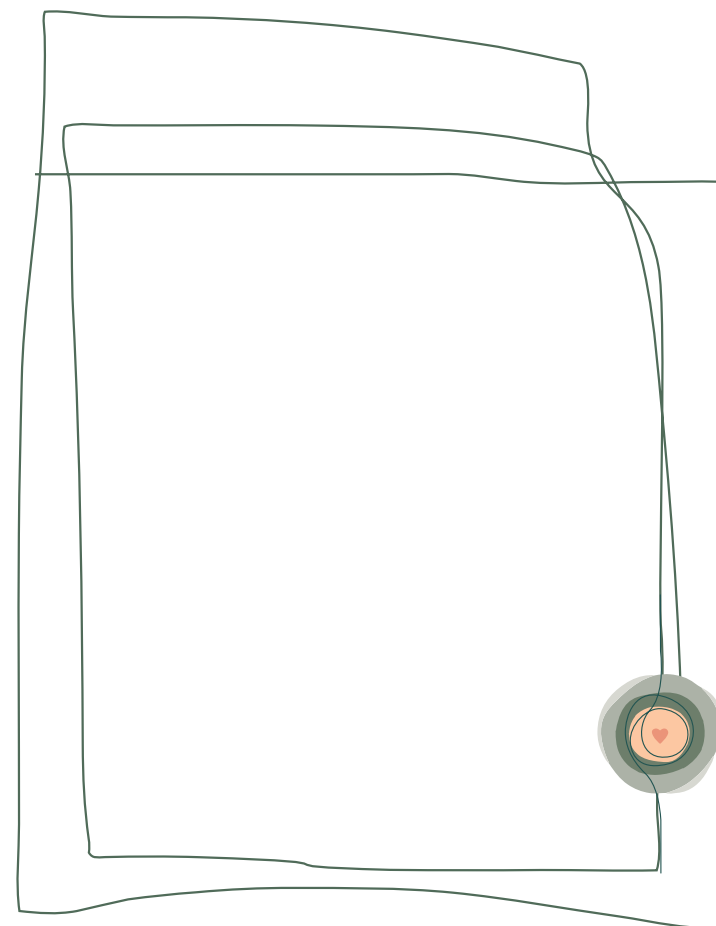
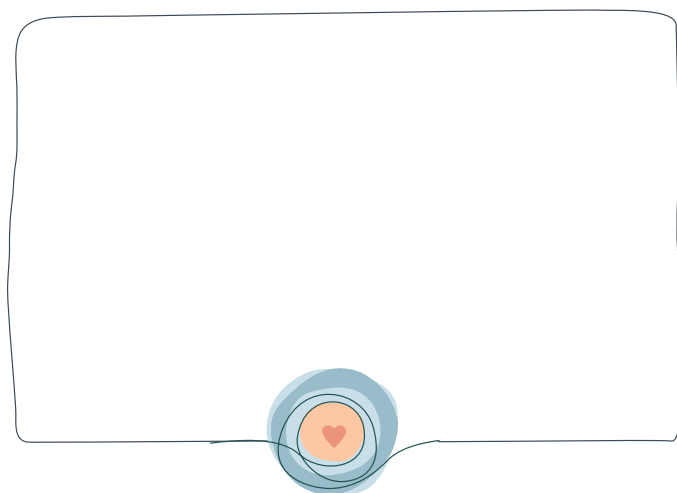
RECONNECTA₊
m e n

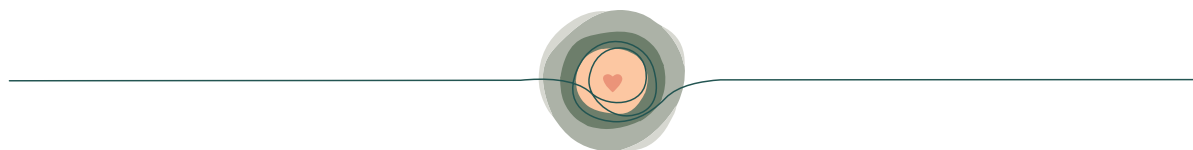
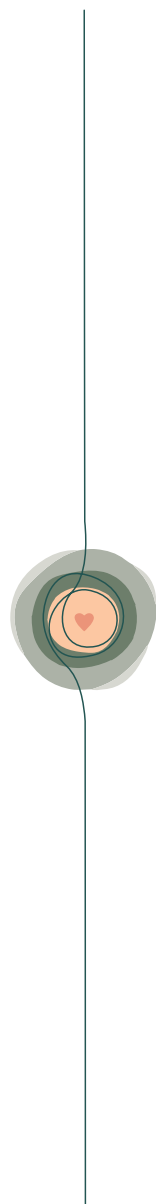


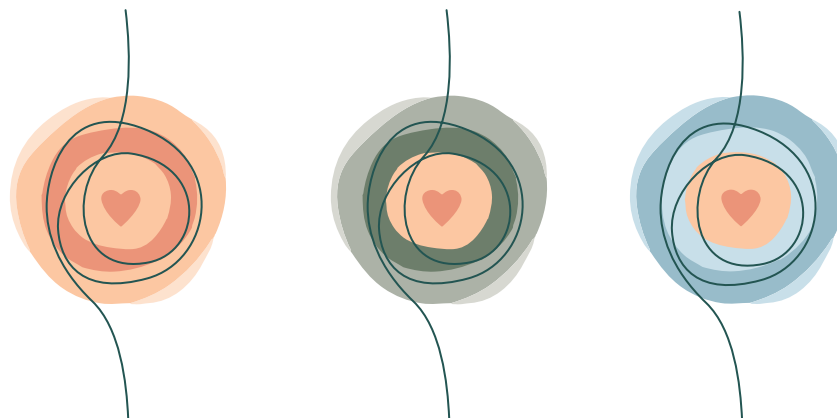


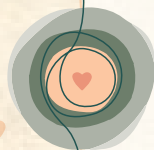


2. O SÍMBOLO

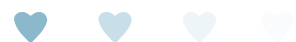








3. AS CORES



AZUL CELESTE = C: 45 / M: 15 / Y: 15 / K: 00



AMARELO TERROSO = C: 20 / M: 30 / Y: 65 / K: 05



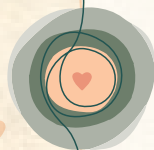
CORAL = C: 00 / M: 60 / Y: 60 / K: 00



VERDE OLIVA = C: 60 / M: 40 / Y: 60 / K: 10



VERDE MUSGO = C: 80 / M: 50 / Y: 80 / K: 40



5. AS FONTES

FONTE INSTITUCIONAL

Avenir Next

abcdefghijklmnopqrstuvwxyz

ABCDEFGHIJKLMNOPQRSTUVWXYZ

1234567890

Avenir Next

abcdefghijklmnopqrstuvwxyz

ABCDEFGHIJKLMNOPQRSTUVWXYZ

1234567890

Avenir Next

abcdefghijklmnopqrstuvwxyz

ABCDEFGHIJKLMNOPQRSTUVWXYZ

1234567890

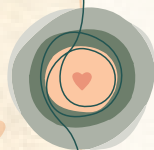
Avenir Next

abcdefghijklmnopqrstuvwxyz

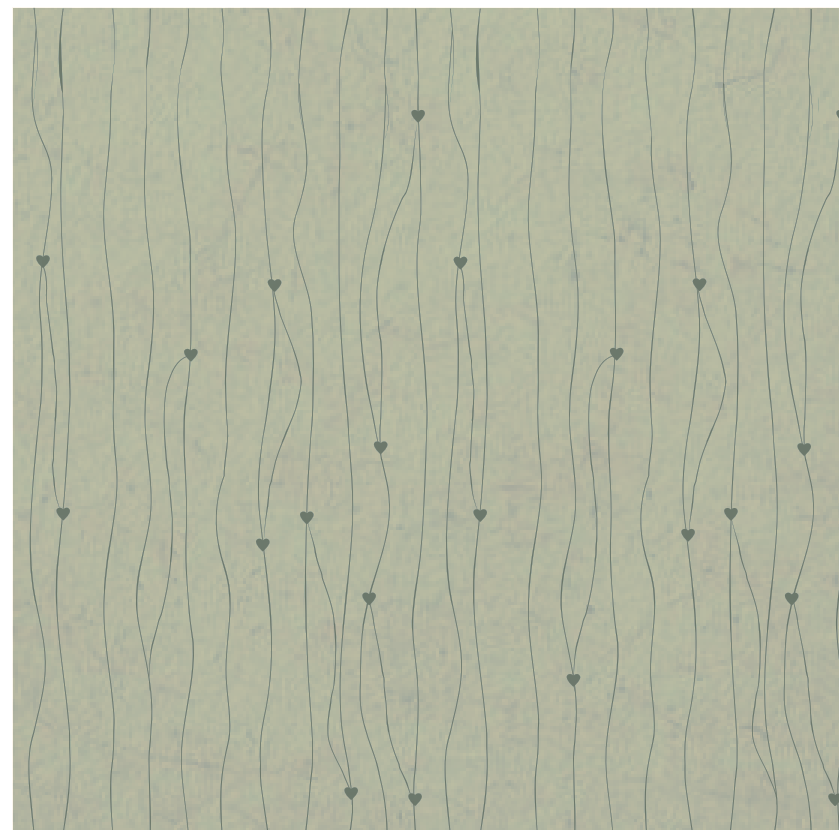
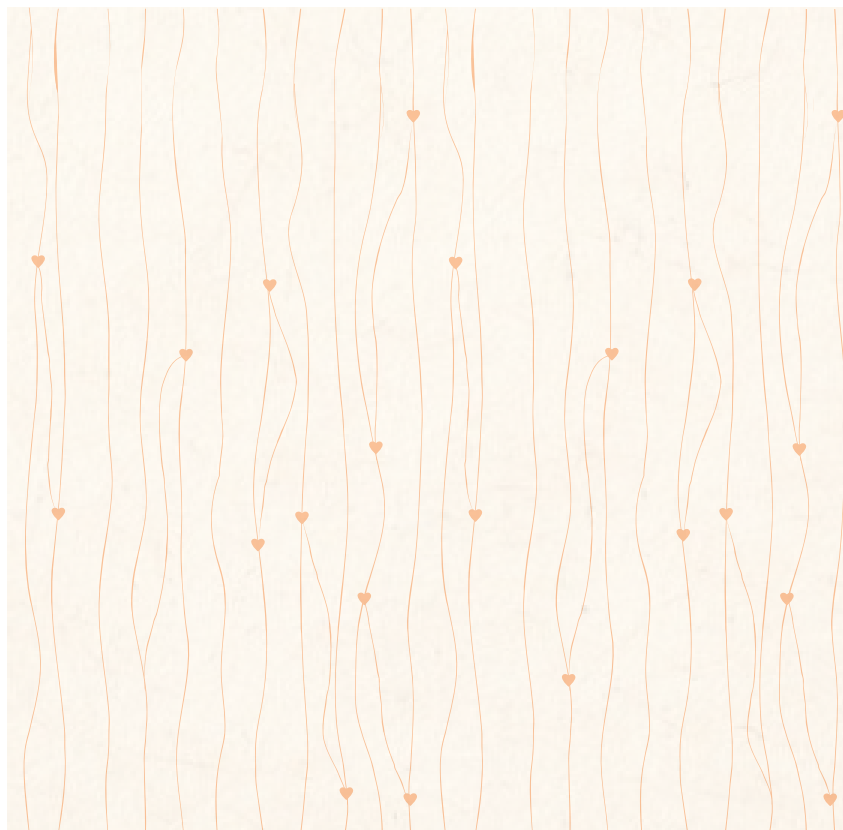
ABCDEFGHIJKLMNOPQRSTUVWXYZ

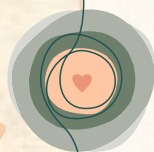
1234567890





5. AS TEXTURAS

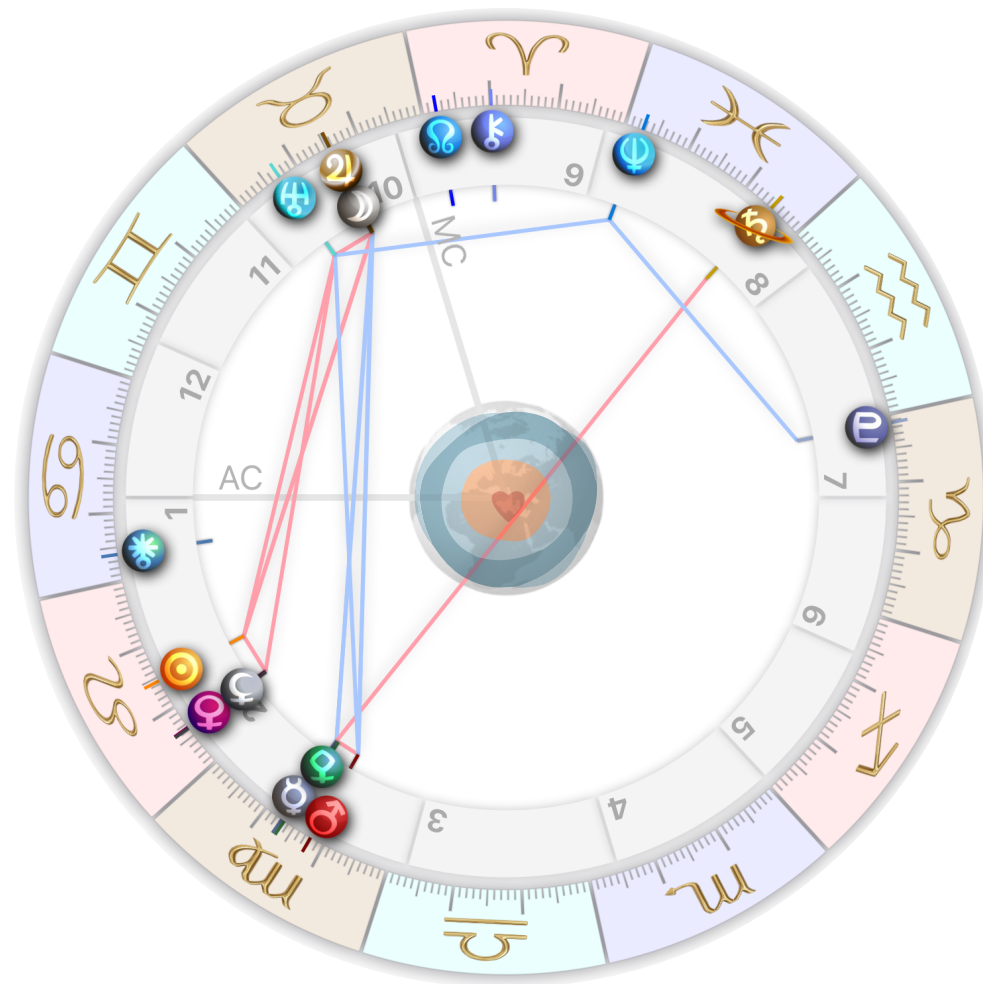
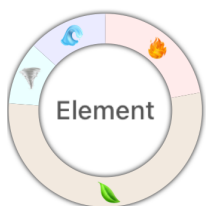


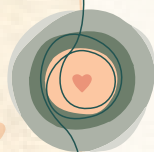


6. MANDALA ASTROLÓGICA

RECONNECTA

08/08/2023, às 5h30min,
em Guaporé/RS - Brasil



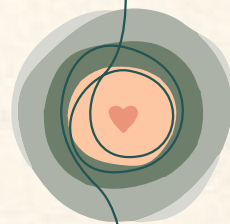


8. IMAGENS CONCEITUAIS*

*sem direito de uso comercial







iD. é um projeto de Christine Sassen, Publicitária (PUCRS), Diretora de Arte e Criação, Música e Astróloga. © Todos os direitos reservados.
@id.entidadevisual